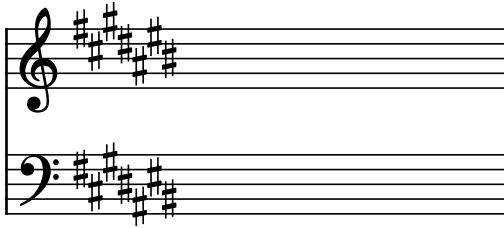
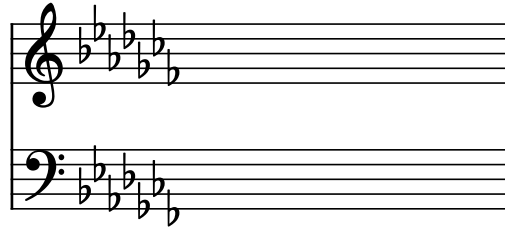


# Key Signature Worksheet

Order of sharps: FCGDAEB  
Try drawing another copy of  
the 7 sharps in order in the  
clefs below!



Order of flats: BEADGCF  
Try drawing another copy of  
the 7 flats in order in the  
clefs below!



Using the order of sharps, draw each key signature and play the scale!

G major: 1 sharp



F major: 1 flat



D major: 2 sharps



Bb major: 2 flats



A major: 3 sharps



Eb major: 3 flats



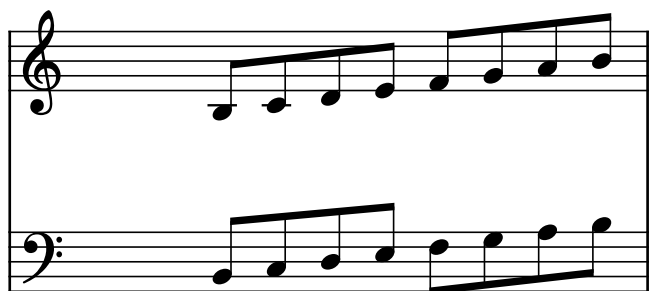
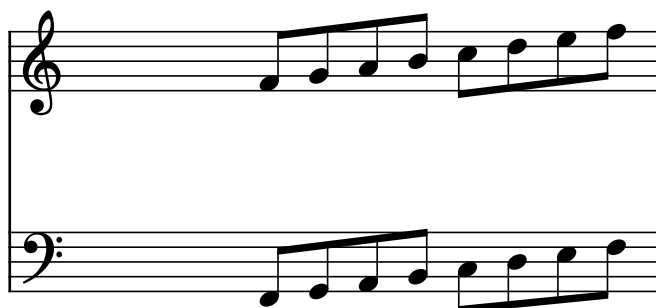
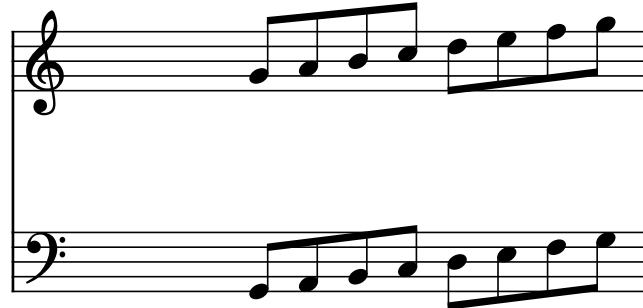
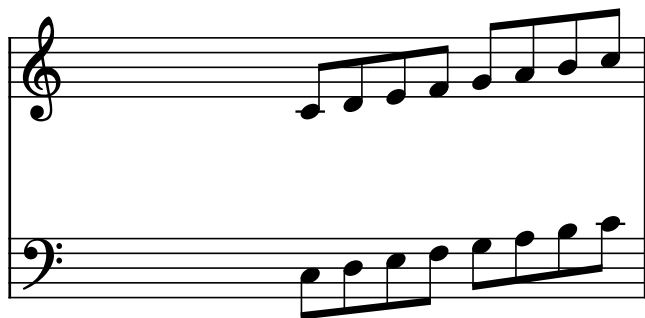
E major: 4 sharps



Ab major: 4 flats



B major: 5 sharps

D $\flat$  major: 5 flatsF $\sharp$  major: 6 sharpsG $\flat$  major: 6 flatsC $\sharp$  major: all 7 sharps!C $\flat$  major: all 7 flats!